



Mosman
COUNCIL

CASE STUDY



INTRODUCTION

Mosman Council's Commitment to Sustainability Led them to Optimise Energy Solutions.

OES spearheaded two transformative projects for Mosman Council. The Marie Bashir Sports Centre, OES upgraded all of the internal and external lights, achieving a remarkable 63% energy savings and cutting nearly 41 tonnes of annual carbon emissions.

This comprehensive upgrade also extended to the bathrooms and external light fittings, contributing to a more sustainable and efficient facility. The Sports Centre redesign surpassed requirements, delivering 400 lux with uniformity, establishing the center as a premier venue for amateur sports events.

The outdated Vista Street Car Park underwent a full compliance redesign, recycling 1,300kg of metal waste. The successful project achieved over 45% energy reduction, transforming the car park into a well-lit and safe environment. An 800 lux intelligent transition lighting system was installed at the entry point, ensuring optimal visibility and security for all users.

DESIGN CHALLENGE

**Compliance Energy and
Operating Cost Reduction**

FOCUS

VISTA STREET CAR PARK

- Entrance Transitions
- Improved Aesthetics
- Overall LUX Improvement

SPORTS CENTRE INTERNAL

- Improved Aesthetics
- Overall LUX Uniformity
- Sports Compliance

SPORTS CENTRE EXTERNAL

- Improved Aesthetics
- Increased LUX Uniformity
- Security Camera Compliance

Lighting by Design

MARIE BASHIR SPORTS CENTRE
Mosman Council 2088



69% Energy Savings
External Down



78% Energy Savings
External Bollard



66% Energy Savings
Pole Light



PATHWAYS



78% Energy Savings
External Bollard



WALKWAYS



69% Energy Savings
External Down



78% Energy Savings
External Bollard



66% Energy Savings
Pole Light





69% Energy Savings
External Down



78% Energy Savings
External Bollard



65% Energy Savings
External Up/Down



STRUCTURE



78% Energy Savings
External Bollard



65% Energy Savings
External Up/Down



COURTS



38% Energy Savings
Ceiling Suspended



71% Energy Savings
Sports Hi-Bay



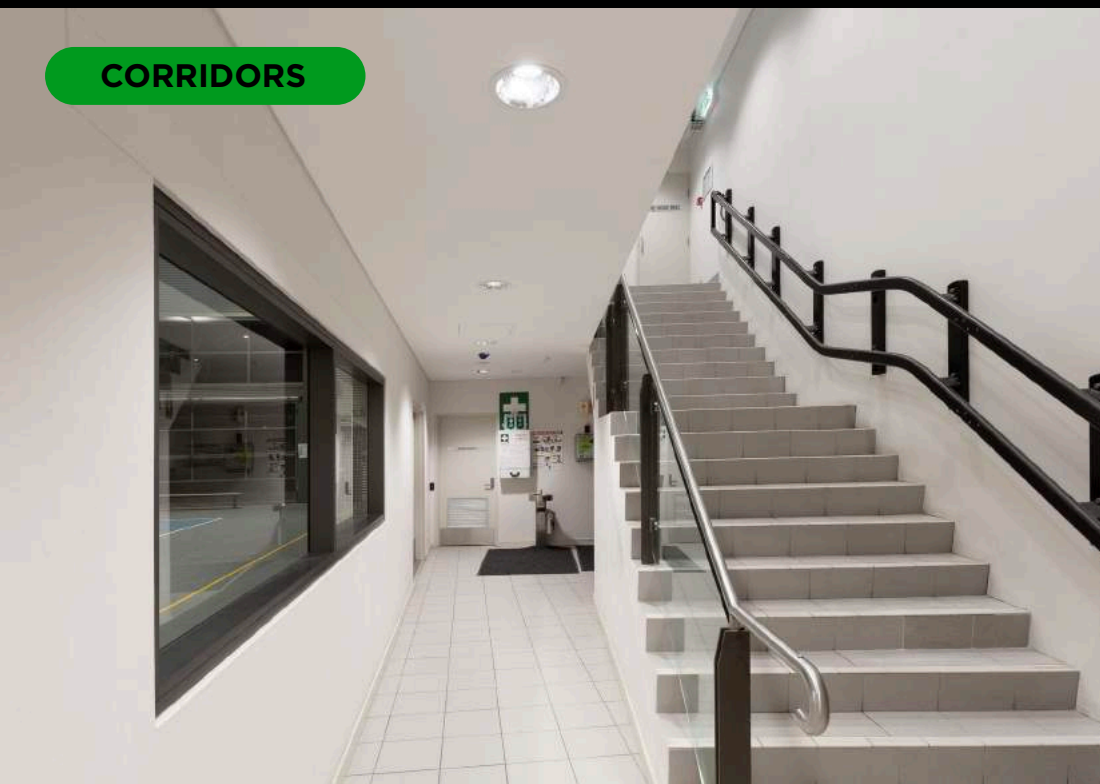
BATHROOMS



CHANGEROOMS



CORRIDORS

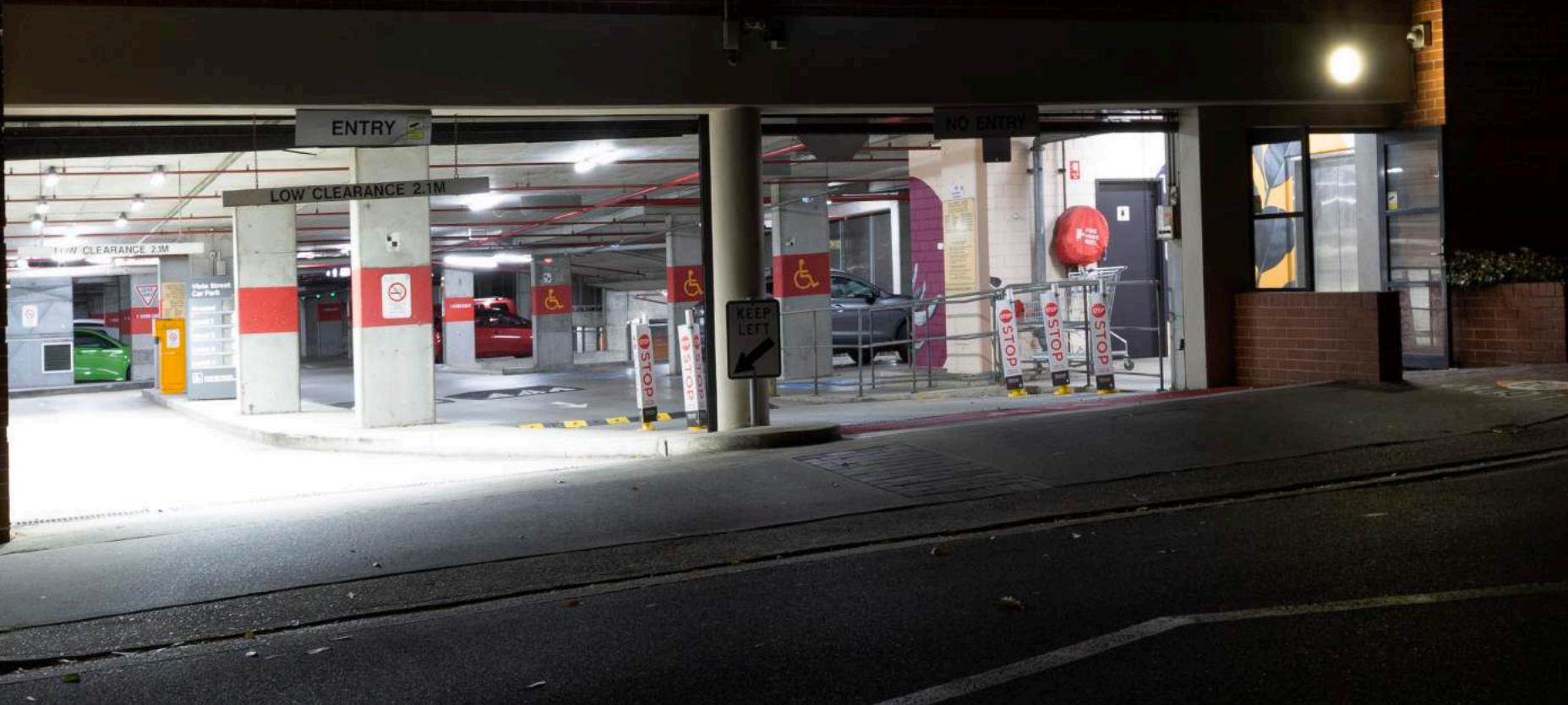


OFFICES



Lighting by Design

VISTA STREET CAR PARK
Mosman Council 2088

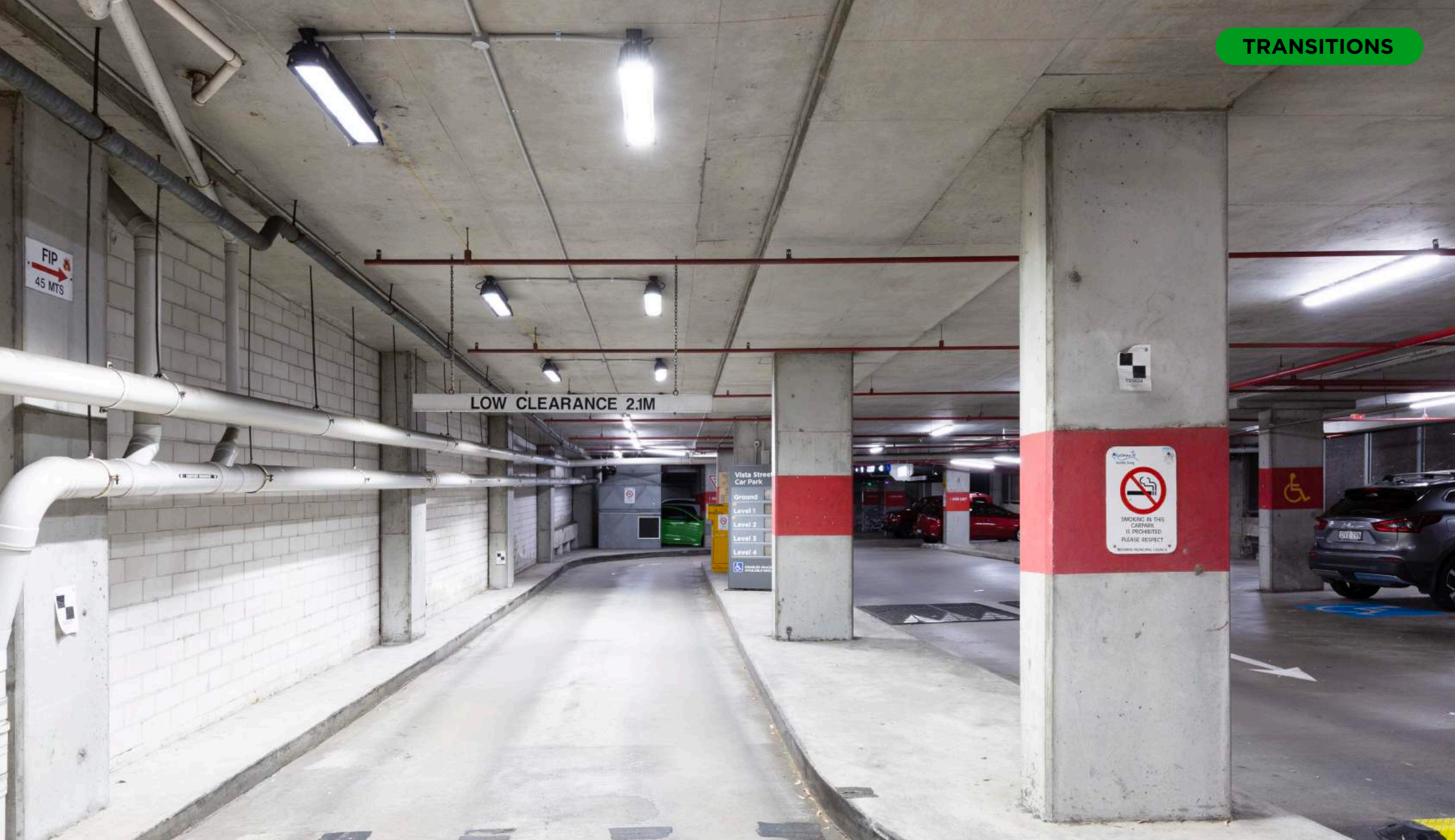


Up to **70%** Energy Savings
Entry Transition



Up to **85%** Energy Savings
High Performance Batten





Up to **70%** Energy Savings
Entry Transition



Up to **85%** Energy Savings
High Performance Batten



MULTI LEVEL



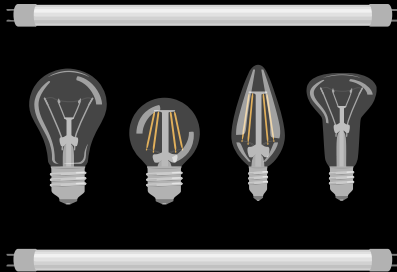
Up to **85%** Energy Savings
High Performance Batten



OES PROCESS

AUDIT

Forensic analysis of existing technology followed by extensive onsite audit of all lighting fixtures.



EVALUATE

TENDER

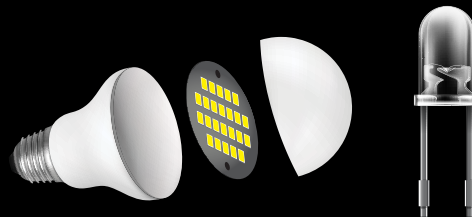
OES conducted a tender exercise with involving upto 4 manufacturers from a pre-qualified vendor assessment of 25 Australian based manufacturers.

COMMERCIAL ANALYSIS

All tech reviewed independently, and products selected for best commercial, performance & aesthetic outcomes.

LIGHTING DESIGN REVIEW

Full environment lighting designs commissioned, extensively reviewed from IES qualified experts.



DELIVER

PILOT PHASE

Pilot installations to provide live feedback for the wider program.

OES PROJECT MANAGEMENT

Operations documenting the entire installation program and reporting structure into the internal process.

OES DELIVERY TECHNOLOGY

Real time installation monitoring application and dashboard.





Dominic Harris | Chief Executive Officer

E: dominic@optimise-energy.com.au | M: +614 9006 7119

OPTIMISE ENERGY SOLUTIONS

A: Level 7, 161 Walker Street, North Sydney NSW 2060

P: +612 9137 1009 W: optimise-energy.com.au

The OES Lighting Holdings Ltd (“OES”) documents are an estimate and for discussion purposes only and do not purport to contain all information that may be required to evaluate the transaction or the financial position of the business case and return on investment opportunity. No reliance may be placed for any purposes whatsoever on the information in the budget or summary on its completeness, accuracy or fairness. No representation or warranty, express or implied, is given by or on behalf of Optimise Energy Solutions, its directors, officers or employees or any other person as to the accuracy or completeness of the information or opinions contained in this document and no liability whatsoever is accepted by Optimise Energy Solutions, its members, directors, officers or employees nor any other person for any loss howsoever arising, directly or indirectly, from any use of such information or opinions or otherwise arising in connection therewith. Any email and/or document, its contents, discussions at this meeting or otherwise made available by Optimise Energy Solutions (whether orally or in writing) in connection with the transaction and/or company, is being provided to the other parties hereto solely for information and is being given on the basis that the recipients keep confidential all such information. The information and opinions expressed in the Optimise Energy Solutions documents are provided as of the date of this document. Certain statements, beliefs and opinions in this document, including those related to the transaction, are forward-looking, which effect Optimise Energy Solutions’ or as appropriate, its directors’ current expectations and projections about Optimise events. By their nature, forward-looking statements involve a number of risks, uncertainties and assumptions that could cause actual results or events to differ materially from those expressed or implied by the forward-looking statements. These risks, uncertainties and assumptions could adversely affect the outcome and financial effects of the plans and events.